

1080P Camstick With Rotatable Lens

SKU: CAMSTICK1080P



**USER MANUAL
FCC CE**

THANK YOU FOR PURCHASING THE CAMSTICK1080P

Please read this manual before operating the camera and keep it handy.

Your purchase should include:

- 1 x Camstick1080p
- 1 x Manual
- 1 x USB Cable

Contact 770-694-6923 if you are missing any of these components.

GET FAMILIAR WITH YOUR CAMSTICK1080P



HOW TO CHARGE THE CAMERA

To charge the device you can:

1. Plug the camera into the USB port of your computer.

If the red light is flashing while plugged in this means that the device is charging. When the red light stays on continuously, the camera is fully charged.

OPERATING THE CAMERA

HOW TO TURN ON THE CAMERA

1. Press and hold the ON/OFF button until the red indicator light turns on.
2. Once the light is on steady, the camera is in standby mode.

HOW TO TAKE CONTINUOUS RECORDING VIDEOS

1. By default, your device will come in continuous recording mode. This means that when you begin a recording, it will continue to record until you stop it, the battery goes dead or the memory fills up.
2. To begin recording, once in standby mode, press the ON/OFF button one time. The indicator light will flash 3 times and turn out.
3. The device is now recording.
4. To stop recording, press the ON/OFF button one more time and the indicator light will turn back on to solid red and the device will be in standby mode again.
5. To power off the unit, press and hold the ON/OFF button for several seconds and the indicator light will turn off.

HOW TO RECORD MOTION DETECTION

1. To put the device into motion detection recording mode you must edit a text file that the camera will put on your SD card.
2. To begin, insert a compatible MicroSD card into the device.
3. Plug the device into your computer with the provide USB Cable
4. Access the device's memory by opening File Explorer (Windows PC) or Finder (Mac).
 - a. NOTE: The device will show as a removable disk
5. In the root of the memory card there will be a text file named "SET.txt", open this file.
6. There will be an entry in the text file that says: "Motion 1080P =0". Change the "0" at the end of that entry to "1".
7. Save the file.
8. Unplug the device from your computer and use it as necessary. The device will operate in Motion Detection mode.
 - a. NOTE: To switch back to Continuous mode, follow the same steps as above and just set the Motion entry back to "0".

HOW TO RECORD AUDIO ONLY FILES

1. While in standby mode, quickly double press the ON/OFF button.
2. The blue light will flash 3 times and turn out and the device will be recording audio.
3. To stop audio recording, again quickly double press the ON/OFF button and the unit will return to standby mode.

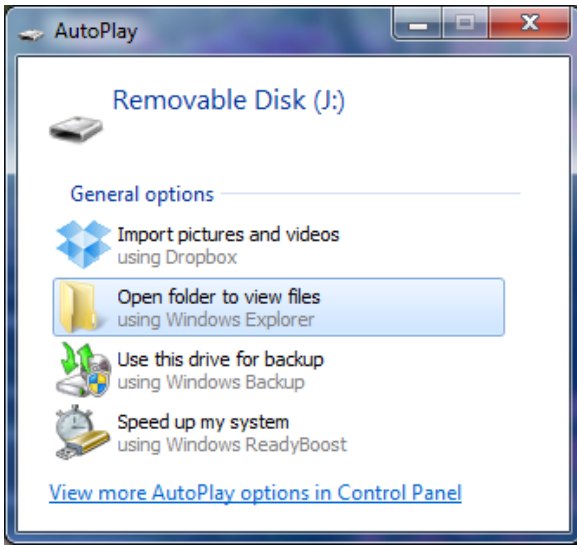
CHANGING YOUR DEVICE SETTINGS (INCLUDING THE DATE/TIME STAMP)

Changing the date/time stamps is done in a similar fashion to enabling motion detection recording. See below:

1. To set the date/time stamp you must edit a text file that the camera will put on your SD card.
2. To begin, insert a compatible MicroSD card into the device.
3. Plug the device into your computer with the provide USB Cable
4. Access the device's memory by opening File Explorer (Windows PC) or Finder (Mac).
 - a. NOTE: The device will show as a removable disk
5. In the root of the memory card there will be a text file named "SET.txt", open this file.
6. There will be an entry similar to this:
 - a. Date/Time =20160101000000
7. Alter the date and time and set it to your current date/time using military time. For example:
 - a. Date/Time =20161107183000
 - b. This time equals November 7, 2016 at 06:30:00 pm
8. Also in this file you may turn the time stamp ON or OFF by setting the TimeStamp entry to:
 - a. 0 = OFF
 - b. 1 = ON

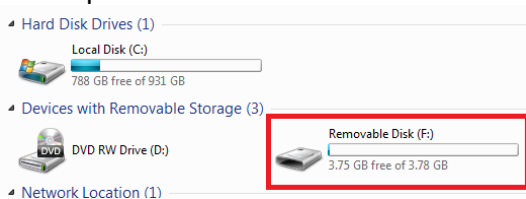
RETRIEVE THE FILES TO YOUR PC

1. Plug the device into your computer's USB port
2. If the Autoplay prompt appears, choose: "Open folder to view files"



Or...

Go to Start > Computer > Removable Disk



3. Open the Removable Disk drive
4. Open the appropriate folder
5. Double click the file you want to view
 - VLC Player is recommended for watching videos

TROUBLESHOOTING

THE DEVICE WON'T TURN ON

- Make sure the device is fully charged

THE DEVICE HAS CRASHED/FROZEN

- Press the reset button one time

DEVICE CONTINUALLY RECORDS IN MOTION MODE

- Motion detection is measured by changing pixels during recording. Any kind of motion including shifting shadows or changing lighting conditions can set off motion detection.

OTHER PROBLEMS

- Call our technical support at **770-694-6923**

SPECIFICATIONS

Video Resolution	1080p
Video Format	.AVI
Frames per Second	30FPS
Vision Angle	65 degrees
Battery Life	3.5 Hrs
Camera Rotation	90 degrees
Loop Recording	No
Functions as Audio Recorder	Yes
Audio Quality	512Kbps
Audio Format	.WAV
Type of Memory	External MicroSD up to 32GB
Recording Usage	1GB/10Mins
USB Interface	2.0 USB
Player Software	VLC recommended
Video Compression	H.264